



S.C. PROMEX S.A.
Str. Industriei Nr. 17
BRĂILA 810391 – ROMÂNIA
Tel.: + 40 239 626000; 40 239 624500
Fax.: + 40 239 616587; 40 239 617778
E-mail: office@promex.ro
<http://www.promex.ro>

DEMOLITION MACHINES

T650D, T2500D, T650E, T450E



APPLICATION

Demolition machines equipped with hydraulic or pneumatic hammer are intended for : demolition of concrete and brick buildings, floors and platforms, breaking of crust, rocks and siderurgy brickworks but also digging-loading works by using the depth bucket type equipment.

The equipment may be used at ambient temperature among -15°C and +40°C and temperate climate humidity, and the telescopic boom may work inside spaces with temperature up to +450°C (only when equipped with pneumatic hammer or conical cutter) and up to +600°C (when equipped with scarifying teeth).

DESCRIPTION

Demolition machines consist of substructure, carriage movable on crawler, superstructure, platform able to rotate 360° on the undercarriage, having the work equipment with telescopic boom verytically jointed on.

Platform travel and slewing, movement of work equipment are hydraulically driven. The power needed for movement of all elements of the machine is supplied by heat engines (model T650D and T2500D) or electric motors (model T650E and T450E).

The main functional parameters of the machine are opermanently shown on a display.

CAB AND CONTROL STATION

FOPS type according to ISO 10262 with strength steel structure

Dimensions according to ISO standard

Mounted on resilient supports

Lined with sound absorbing panels

Security glass all round + Front screen protected by a grating and wire mesh to prevent the radiation

Perfect visibility for operator

Heating and ventilation system, optional air conditioning

Ergonomic seat with proportional electric remote controls integrated

Safety handle for controls cancellation when leaving the cab

Display showing the main operation parameters of the machine

Board for conventional controls located in the ergonomic field of operator

MOTORS

	HEAT		ELECTRIC	
	T650D	T2500D	T650E	T450E
Model	PERKINS 1106D-E66TA	CUMMINS-QSB230	NIB2-3158-80-4	AT250M-65-4
Power	129kW at 2200rpm	169kW at 2200rpm	132kW at 1485rpm	75kW at 1485rpm
Voltage	-	-	380/660V-50Hz	380/660V-50Hz
Type	Diesel, 4 stroke with direct injection	Diesel, 4 stroke with direct injection	-	-
Bore/stroke	100/127 mm	102/120 mm	-	-
Capacity	5985 cm3	5900 cm3	-	-
No. of cylinders	6	6	-	-
Cooling	with water	with water	-	-
Batteries	2x180 Ah/ 12 V	2x180 Ah/ 12 V	-	-

HYDRAULIC SYSTEM

	T650D	T2500D	T650E	T450E
Hydraulic pump	LS (load sensing) control system; swash plate pump, variable displacement and power regulator			
Max flow	400 l/min	400 l/min	400 l/min	300 l/min
Max. pressure	325 bar	300 bar	300 bar	325 bar
Pump regulation	hydraulic power regulator LS, compensation pressure, automatic oil flow optimizing, compensation flow.			
Oil cooler	Aluminium compact cooler, electrical driven fan, controlled by a hydraulic temperature switch			
Oil filter	10 µm			

WORK EQUIPMENT

	T650D	T2500D	T650E	T450E
Boom slewing drive		Hydraulic motor with axial pistons		
Boom slewing speed	0...10 rot/min	0...10 rot/min	0...10 rot/min	0...8 rot/min
Boom telescoping speed	0.64 m/sec	0.52 m/sec	0.64 m/sec	0.64 m/sec
Boom retracting speed	1.24 m/sec	0.90 m/sec	1.24 m/sec	1.24 m/sec
Boom stroke	3700 mm	3700 mm	3700 mm	2400 mm
Boom slewing angle	360°	360°	360°	360°
Boom inclination angle	120°	120°	120°	114°
Hydraulic cylinders (pcs x bore)				
Boom sloping mechanism	2 x 130 mm			
Boom telescoping mechanism	1 x 115 mm			
Hammer tilting mechanism	1 x 130 mm			

PLATFORM SLEWING

	T650D	T2500D	T650E	T450E
Transmission	Compact planetary gearbox with swash plate hydraulic motor with braking integrated valves and torque control			
Slewing bearing	Single race ball bearing, external teeth			
Slewing torque	63 KNm	85 KNm	63 KNm	57 KNm
Slewing speed		0...9 rev/min		
Brake	Normal closed multi-disk brake, in oil bath			

TRAVELLING

	T650D	T2500D	T650E	T450E
Version		Wide gauge		
Transmission	Two compact planetary gearboxes			
Travelling speed	2.4 ; 4.6 Km/h	2.5 ; 4.4 Km/h	2.4 Km/h	2.4 Km/h
Hydraulic motor	swash plate hydraulic motor with integrated brake valve			
Pulling force	214 KN	250 KN	214 KN	210 KN
Track rollers/carrier rollers	8 / 2	8 / 2	8 / 2	6 / 1
Brake	Normal closed multi-disk brake, in oil bath			

CAPACITIES

	T650D	T2500D	T650E	T450E
Fuel tank	295 l	450 l	295 l	
Motor lubrication	25 l	20 l	25 l	
Slewing gearbox	8 l		8 l	8 l
Travelling transmission	35 l	11 l	35 l	35 l
Hydraulic system	325 l	390 l	390 l	275 l
Hydraulic tank	300 l	275 l	275 l	270 l

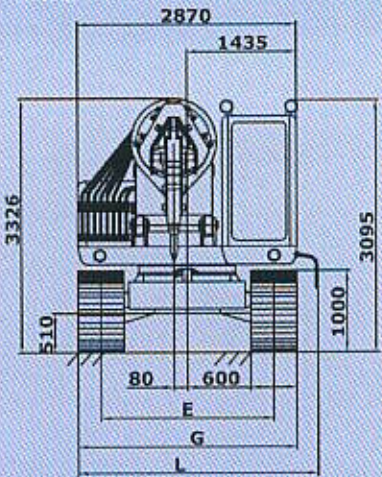
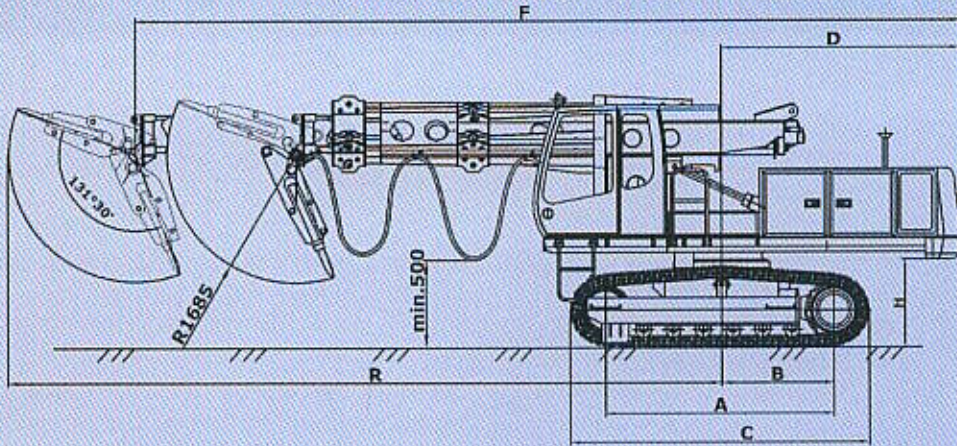
OPERATING WEIGHT

	T650D	T2500D	T650E	T450E
Track width				
600 mm	25200 daN	29500 daN	25200 daN	22500 daN
700 mm		29900 daN	25600 daN	

ATTACHMENTS

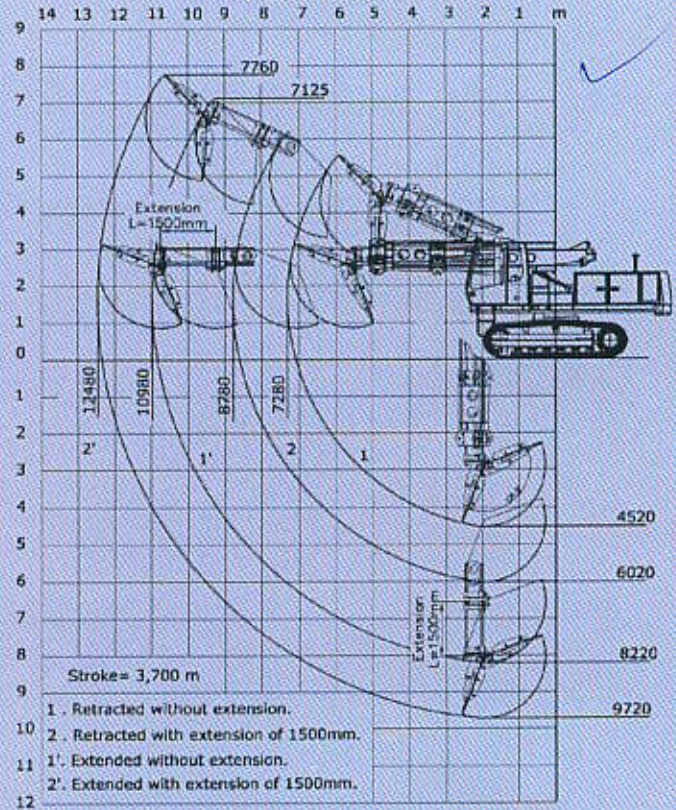
Scarifying teeth;
Pneumatic hammer;
Conical cutter;
Digging bucket.

GENERAL ASSEMBLY T 650 D, T 2500 D, T 650 E, T 450 E

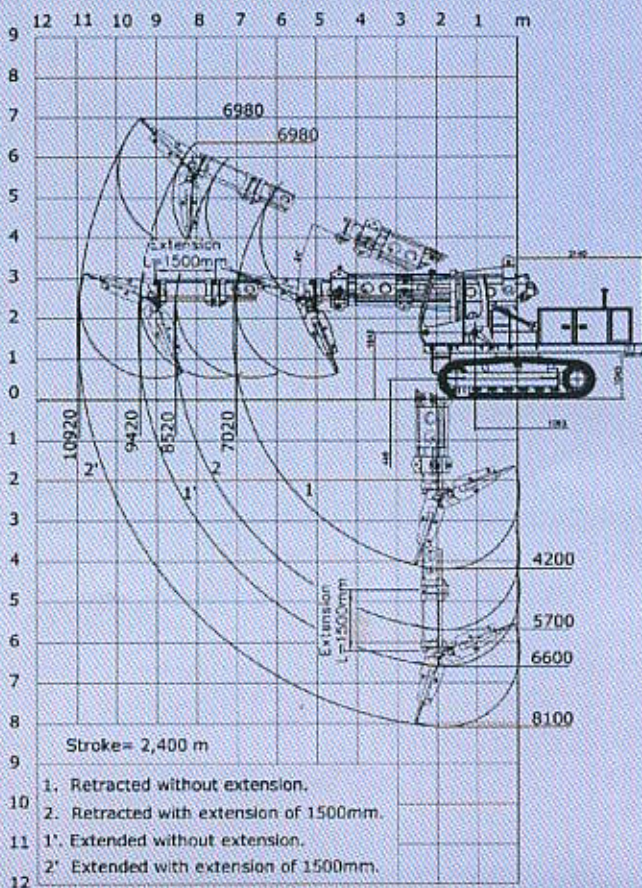


	T 650 D	T 2500 D	T 650 E	T 450 E
A [mm]	3595	3595	3595	3050
B [mm]	1795	1795	1795	1475
C [mm]	4520	4520	4520	3980
D [mm]	2975	3035	2975	2975
E [mm]	2390	2600	2390	2270
F [mm]	8880	10940	8880	8880
G [mm]	2990	3200	2990	2870
H [mm]	1144	1144	1144	1045
L [mm]	3230	3440	3230	3170
R [mm]	12980	14100	12980	10920

WORKING DIAGRAM WITH PNEUMATIC HAMMER
T 650 D, T 650 E



WORKING DIAGRAM WITH PNEUMATIC HAMMER
T 450 E



WORKING DIAGRAM WITH PNEUMATIC HAMMER
T 2500 D

